

Krzysztof Nowak

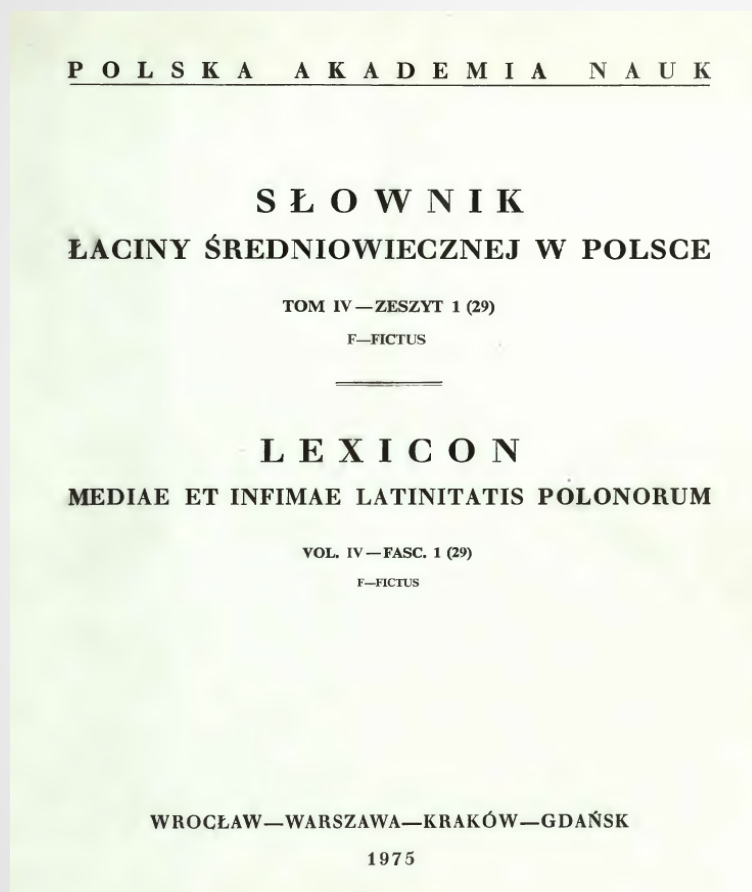
Lexicon Mediae et Infimae Latinitatis Polonorum

Language change in the *Dictionary of Polish Medieval Latin*

Institute of Polish Language, Polish Academy of Sciences



History of the Project



- first fascicle: 1953
- scope
 - Medieval Latin
 - Polish territory
 - 1000 – ca. 1550
- other projects
 - e-dictionary (2011-2014)
 - corpus (2012-2016)

Outline

Language Change in the LMILP

1 History of the Project

2 Medieval Latin in Poland

3 Language Change Markers

3.1 Word Formation

3.2 Semantic Change

4 Language Change in the Electronic Dictionary

5 Perspectives

Medieval Latin: stability and change

- **stability ...**

- language transmission (cathedral schools, universities etc.)
- language use: literature, instruction, liturgy etc.
- Classical Latin → Medieval Latin
- gap between oral and written form

- **... and change**

- changing socio-cultural conditions
- contact with the non-European cultures
- Latin as an „acquired second language” (Herren 1996)

Medieval Latin Lexicography

1. evolution of the Medieval Latin from Classical and post-Classical times
2. internal evolution of the Medieval Latin
3. regional diversification of the Medieval Latin
4. Medieval Latin and the vernacular

Word Formation. From Classical to Medieval

CLASSICAL HERITAGE

F. = Forcellini, *Lexicon*

Th. = *Thesaurus Linguae Latinae*

Bl. = *Dictionnaire des auteurs chrétiens*

S. = *Kirchenlateinisches Wörterbuch*

videri vult (saec. XVII).

SANCTUS s. **SANTUS**, -a, -um F. Th. Bl. S.
Dc. B. L. A. H. Ha. N. K. O. W. I. *adi.* 1. *święty*;
cieszący się chwałą świętych, czczony jako święty;
sacer, beatus, gloria caelesti fruens. Constr. sq. post:
HESSE Matth. IV p. 214: *post Christum s-ior fuit*

SYNCHRONIC DIMENSION

Dc. = DuCange

B. = Bartal (Hungary)

L. = Latham (United Kingdom)

A. = Arnaldi (Italy)

K. = Kostrencic (former Yugoslavia)

O. = Odelman (Sweden)

W. = Weijers (Netherlands)

Word Formation. Neologism and Borrowings. Language Labels

- language labels

- **SLEDZIOWKA**, -ae f. (*Pol.* śledziówka)

‘a fish barrel’ (*Pol.* śledź ‘herring’)

- **SATINUM**, -i n. (*Fr.* satin)

‘a satin’

- **SCATULA**, -ae f. (*It.* scatola)

‘a casket’



- indirect borrowings

- **SCHALA**, -ae f. (*Germ.* Schale, *Pol.* szala) ‘a bowl’
- **SLUZA**, -ae f. (*Germ.* Schleuse et *Pol.* śluza) ‘a sluice’

Word Formation. Details (1)

- suffix
 - from word of Classical origin
 - **SPASMATICUS** ... (spasma) ‘suffering from spasm’
 - from word coined during the Middle Ages
 - **SCOTISANS** ... (Scotus Duns) ‘a follower of Duns Scotus, Scotist’
- prefix
 - **SATIS-BONUS** ‘innocent’ vs. **SATISFACTIO** ‘satisfaction’
- change of the inflectional paradigm
 - eg. 4th → 2nd declension: **SOCRUS**, -i (socrus, -us) ‘son-in-law’

Word Formation. Details (2)

- compounding
 - **SIMPLIFICO** ... (*simplex et facio*) ‘to simplify’; **SAXIFFAGIA** ... (*saxum et φαγειν*) ‘rockfoils’; **SOLFISATIO** ... (*a syllabis musicalibus sol, mi, fa*) ‘solmisation’
- uncertainty
 - **SAREPTA** ... (*a nomine oppidi Sarepta?*) [lat. „from the name of the city Sarepta?)] ‘a copse’
 - **SCORROR** ... (*orig. inc.*) [= *vox originis incertae* ‘word of uncertain origin’] ‘to wander’
- language labels
 - **SCACUS** ... (*vox Arab. vel. Pers*) [= ‘word of Arabian or Persian origin’] ‘chess’
 - **SAPHEA** ... (*Arab. al-Safihat*) ‘a kind of astrolabium’
 - **SCARSELLA** ... (*vox It.*) ‘Italian word’ vs. **SCATULA** ... (*It. scatola*)

Word Formation. Ghost Words and Anomalies

- ghost words?
 - **SANGUIVIOLENTUS** ... (e sanguinolentus *depravatum*) 'derived incorrectly, due to miscomprehension from the word...'
- anomalies

SCRIBO, -ere, -psi, -ptum F. Th. Bl. S. Dc.
L. A. H. N. O W. [*perf. a stirpe praes. scribisti*:
ArHist VIII p. 463 (a. 1401): per suam voluntatem
scribisti literam nostram militalem. *inf. scriberi*:
KsgZKal p. 122 (a. 1406): Hanka ... proposuit
contra Przetslaum ... quod dedit se scriberi super
litteram resignacionis hereditatem Slawosewo.]

instead of regular
Classical form
scripsisti

instead of regular
Classical form
scribere

Semantic Change. Contrastivity

SANCTUS s. **SANTUS**, -a, -um F. Th. Bl. S. Dc. B. L. A. H. Ha. N. K. O. W. I. *adi.* 1. *święty, cieszący się chwałą świętych, czczony jako święty; sacer, beatus, gloria caelesti fruens.* ~~Constantinus post~~ ~~HESSE Math.~~ ~~post Christiani s. for. salt~~ ~~BVMaria universis.~~ 2. *noszący znamię świętości, czysty, nieskazitelny, doskonały; sanctitate imbutus, rectus, castus, perfectus.* ~~Constantinus post~~ ~~Waldm~~ ~~p. 4. 3 a. 1288~~ ~~...~~ 3. *poświęcony Bogu, święty, sakralny, uroczysty; Deo dicatus, ad sacra celebranda destinatus, sacer, sollemnis.* 4. *tytuł honorowy; appellatio honorifica:* a. *władców świeckich, szacowny, czcigodny; principum ac imperatorum, i. aestimatione dignus, venerabilis* b. *osób duchownych (zwł. papieża) lub instytucji kościelnych, święty, świątobliwy; personarum devotarum (praec. papae) officiorumque ecclesiarum, i.q. sacer, sacrosanctus* KodWp II p. 12 (a. 1288): *nos Iacobus ... archiepiscopus s-e Gneznensis ecclesie.* KodMp IV p. 8 (a. 1386): *pontificatus s-issimi in Christo patris ... domini Urbani ... pape anno octauo. Ita saepius.*

„CLASSICAL” SENSES (= no source evidence)

1. *sacer* ‘saint’
2. *castus* ‘pure’
3. *Deo dicatus* ‘holy, consecrated’
4. a. *appellatio honorifica principum* ‘honorific title of secular leaders’

„MEDIEVAL” SENSE (= source evidence)

4. b. *appellatio honorifica personarum devotarum (praec. papae)* ‘honorific title of ecclesiastical leaders (esp. the pope)’

Semantic Change. Influence of the Vernacular

SILVA 'a forest'



'broken down trees'
(Pol. łom)



'a copse'
(Pol. zapust)



'an alder copse'
(Pol. olszyna)

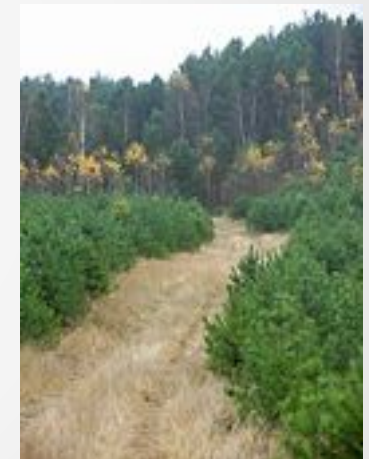
Glossae Pol. TPaw III p. 264 (a. 1393): pro s-a, vulgariter «**łomcza**». ZapSądWp I p. 112 (a. 1402): in ... magna s-a, wlgariter «**zapust et ostrow**» (ita saepius). KodMp IV p. 135 (a. 1412): s-am ... que «**olsini**» nuncupatur (ita saepius). DokMp V p. 213 (a. 1419): ad s-am parvam, que wlgariter dicitur «**Smvg**». KodWp VIII p. 217 (a. 1422): in s-a, alias «**za powyednem leszye**» (ita saepius). KodWp XI p. 280 (a. 1443): in s-a dicta «**puszcza**». StPPP II p. 751 (a. 1469): sub s-a, alias «**pod langem**» (ita saepius). GLcerv p. 725: saltus est s-a inuia nec uiatori peruia, in qua pecudes aestiuare solent, «**dąbrze**».



'a grove or meadow
in a valley'
(Pol. smug)



'a riparian forest'
(Pol. łąg)



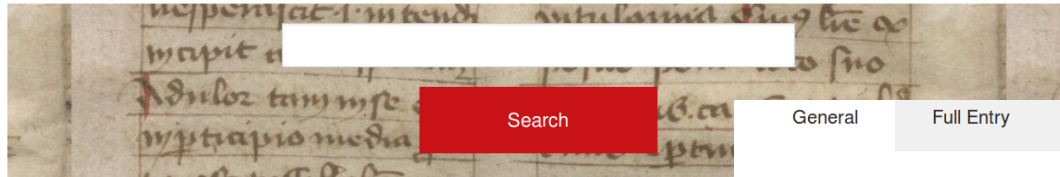
'a dense forest'
(Pol. puszcza)

Language Change. Other Markers

- definitions of the calques (= semantic loans)
- chronological markers within bibliographic sigla
- sense ordering
- usage markers, e.g. *met.* 'metaphorically' or *meton.* 'metonymically'

Towards Effective Presentation and Retrieval. Electronic LMILP

eLexicon Mediae et Infimae Latinitatis Search Browse About Search



Search

General Full Entry More

Grammar

Forms **LEXIS** Etymology Gr. λέξις Inflectional type -eos
Part of Speech noun Gender feminine

Meaning

+ locutio

- LATROCINALITER
- LATROCINATORIUS
- LATROCINIUM
- LATROCINOR
- LATRUNCULARIUS
- LATRUNCULATOR
- LATRUNCULUS
- LATRUS
- LATTAE
- LATTERALIS
- LEXIS**

eLexicon Mediae et Infimae Latinitatis Search Browse About

Advanced Search

Search input field

Matching: full partial

Search

Part of Speech

Etymology

Syntax

Meaning

Quotations

Part of Speech, Inflectional Type, Gender

substantivum

Paradigma

Genus

Towards Effective Presentation and Retrieval. Perspectives

What's next?

1 recreation of the Classical background

1.1 integration of external resources

2 compensating for lacking evidence

2.1 corpus integration

3 data reuse

3.1 effective visualisation

Plus?

E-mail

krzysztof@ijp-pan.krakow.pl

WWW

<http://scriptores.pl>